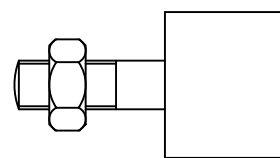


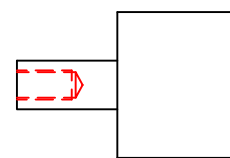
TYPE	∅D	WALL	∅D1	B	E	L1	L2	L3
AR 3/4"	19.05	1	6	10	15	L+20	L+50	L+2
AR 1"	25.4	2	6/8	3	15	L+6	L+36	L+2
AR 1 1/8"	28.575	1.5	8/10	2	15	L+4	L+34	L+2
AR 1 1/2"	38.1	2	10	8	15	L+16	L+46	L+2
AR 2"	50.8	1.5	10	8.5	15	L+17	L+47	L+2

ALTERNATIVE SHAFT ENDS

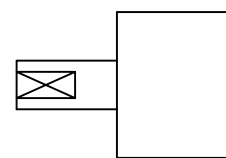
MALE THREAD



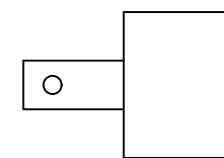
FEMALE THREAD



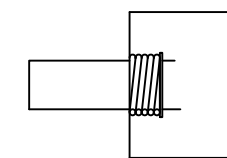
FLATS



WIRE / PIN



SPRING



THIS DRAWING IS THE PROPERTY OF ARNOTT HANDLING EQUIPMENT AND MUST NOT BE REPRODUCED IN ANY WAY WITHOUT WRITTEN CONSENT

TITLE

STANDARD STAINLESS STEEL / ALUMINIUM GRAVITY ROLLER

